

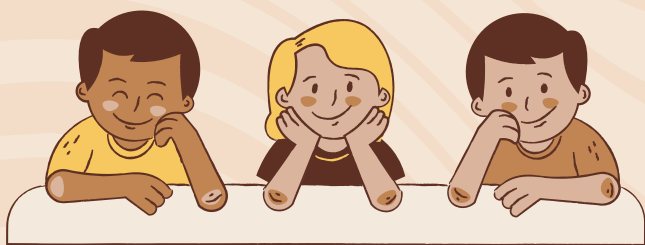
ELIGIBILITY RESULTS



NOT ELIGIBLE

TEAM DISCUSSES
STRENGTHS
NEEDS
INTERVENTIONS

IDENTIFIES NEXT STEPS



IN-CLASS SUPPORTS

ALL STUDENTS ARE ABLE TO RECEIVE IN-CLASS SUPPORTS INCLUDING:

- TECHNOLOGY
- ONLINE TRACKING OF ASSIGNMENTS
- ADULTS TO ASSIST
- PEER-ASSISTED LEARNING
- BEFORE SCHOOL HELP
- AFTER SCHOOL HELP

SOCIAL-EMOTIONAL SUPPORTS

ALL STUDENTS ARE ABLE TO RECEIVE SOCIAL-EMOTIONAL SUPPORTS INCLUDING:

- GUIDANCE COUNSELING
- CAREER COUNSELING
- EXTRACURRICULAR ACTIVITIES
- PARENT-STUDENT-TEACHER CHECK-INS
- REFERRALS FOR COMMUNITY COUNSELING



ELIGIBLE

TEAM DISCUSSES
STRENGTHS
NEEDS
DISABILITY-RELATED NEEDS

IDENTIFIES NEXT STEPS
PLANNING & PLACEMENT



ACADEMIC & FUNCTIONAL SUPPORTS

THE TEAM DETERMINES ALL SUPPORTS AND SERVICES NECESSARY TO OFFER THE STUDENT:

A FREE APPROPRIATE PUBLIC EDUCATION (FAPE) IN THE LEAST RESTRICTIVE ENVIRONMENT (LRE)

NEXT STEPS

THERE IS WRITTEN DOCUMENTATION ABOUT TEAM DECISIONS.

REGULAR REVIEWS AND RE-EVALUATIONS WILL OCCUR

YOU HAVE THE RIGHT TO APPEAL ANY DECISIONS MADE BY THE TEAM.

PLEASE REACH OUT IF YOU HAVE QUESTIONS
THANK YOU!

LAUREL PELTIER, TEAM CHAIR
LPELTIER@COLLABORATIVE.ORG